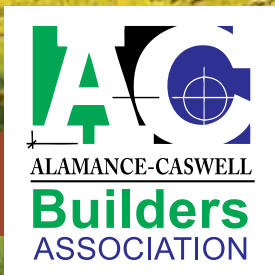


# ALAMANCE-CASWELL PARADE *of* HOMES 2025



OCTOBER 4-5 | OCTOBER 11-12  
1:00 - 5:00 PM DAILY



[ALAMANCEBUILDERPARADE.COM](https://alamancebuilderparade.com)







## We help you Design **The Life** you want.

**Your best choice** for quality countertop surfaces. Select from our stunning marble, timeless granite, porcelain, quartz and quartzite, and more.

**Enjoy personal customer service** from experts who care. We are dedicated to helping you throughout the selection process.

**We know that every customer has their own unique style.** With our extensive collection of popular and exotic stone, you're certain to find everything you need in one convenient location.

**Guaranteed customer satisfaction.** Let us impress you with our expedient scheduling, quality fabrication, and professional installation, backed by our industry leading warranty.

From beginning to end, we guide you through our streamlined process and strive to make it easy and fun for your home or business. Customer satisfaction is our main goal.

### **Showroom Hours**

Monday - Friday 8am - 5pm • Saturday & Sunday (By Appointment)

Appointments after hours, during the week, are also welcome.

703 Park Lawn Ct., Kernersville, NC 27284   info@amanzigranite.com   (336) 993-9988



# Crafted with Care. Built for Your Best Years.



**Triad Business Journal  
Fast 50 Winner**



**4.9 Google Rating**



**Building in the Community  
that we live in**



**Owners**

**Jensen & Mtende Roll**



**(336) 365-8673**

**office@rollconstruction.co  
rollconstruction.co**

**Schedule a  
consultation**

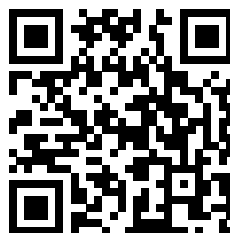


# Directory of Advertisers

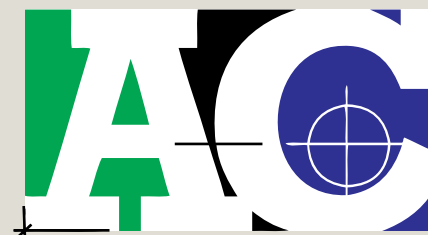
|   |    |
|---|----|
| Amanzi Mable Granite Quartz.....            | 2  |
| Chandler Concrete.....                      | 9  |
| Convergence .....                           | 18 |
| Foust Pools.....                            | 22 |
| Garage Force of the Triad.....              | 9  |
| GCF Construction .....                      | 15 |
| Heritage Homes of the Carolinas .....       | 24 |
| Howard Hanna Allen Tate Realtors.....       | 14 |
| Howard Hanna - Sandy Ellington-Graves ..... | 9  |
| King Electric.....                          | 22 |
| L& W Sand & Stone.....                      | 18 |
| Lighting Etc.....                           | 19 |
| Payne Oil.....                              | 14 |
| Pella Windows and Doors.....                | 22 |
| Remax Diamond Realty.....                   | 18 |
| Roll Construction.....                      | 3  |
| Sasser Flooring & Design.....               | 18 |
| Sharpe Awards.....                          | 22 |
| Talbert Building Supply .....               | 14 |
| The Building Center .....                   | 9  |
| Turnleaf Designs .....                      | 22 |

**Miss the *Parade?* We've Got You!**

**All of the virtual tours will  
be on our website through  
September 2026**



**Visit [www.AlamanceBuilderParade.com](http://www.AlamanceBuilderParade.com)**



**ALAMANCE-CASWELL**

**Builders  
ASSOCIATION**

2450 Hanford Road  
Burlington, NC 27215  
T: 336-227-1336 | F: 336-227-2123  
office@alamancebuilders.org  
www.alamancebuilders.org  
Jill Mongelli - Executive Officer

## **2025 BOARD OF DIRECTORS**

*President* ..... Josh McDowell  
*1st Vice President* ..... Rick Murray  
*2nd Vice President* ..... Bob Welch  
*Secretary* ..... Jensen Roll  
*Treasurer* ..... Don McBane  
*Past President* ..... Jeff Throneburg

*Builder Members Serving 2nd Year*  
Nathan Sawyer, David Foy

*Builder Members Serving 1st Year*  
Jensen Roll, Clifton Fogleman

*Associate Members Serving 2nd Year*  
Clint Chappell, Maggie Renuart  
Jennifer Bryant

*Associate Members Serving 1st Year*  
Dalton Kelly, Matthew Pruitt,  
Tommy Bryant

*State Directors*  
Allison Terrell, Sandy Ellington-Graves

*National Directors*  
Josh McDowell, Allison Terrell

## **2025 Parade of Homes**

Magazine and website by Turnleaf  
Designs - [www.turnleafdesigns.com](http://www.turnleafdesigns.com)

Renderings and Floorplans by Camelot  
Creative - [www.camelotcreative.net](http://www.camelotcreative.net)



# ALAMANCE-CASWELL PARADE *of* HOMES

## LETTER FROM THE PRESIDENT

As a proud member of the Alamance-Caswell Builders Association, it's my honor to welcome you to the 2025 Parade of Homes.

Over the next two weekends, we're excited to open the doors to an outstanding collection of newly built homes across Alamance and Caswell counties. This event is more than a showcase—it's an opportunity to experience the craftsmanship, innovation, and thoughtful design that define today's homebuilding.

Whether you're a first-time buyer, looking to upgrade, or simply gathering ideas for your next project, the homes featured in this year's parade offer something for everyone. With a wide range of styles, sizes, and price points, each home reflects the dedication and hard work of the builders who brought them to life.

In today's market, demand for high-quality homes remains strong, and inventory is limited. That's why this event comes at the perfect time for anyone looking to make a smart move. Many of these homes are already drawing serious interest—and for good reason.

As a builder, I can tell you firsthand the level of precision, planning, and teamwork that goes into each home. The Parade of Homes is a celebration of that effort, and we're proud to share the results with you.

I'd like to personally thank our Parade of Homes Committee, our Association's leadership, and every builder and partner involved in making this event possible. Your support helps us continue to elevate the standards of homebuilding in our community.

We invite you to explore, ask questions, and imagine the possibilities. We look forward to seeing you on the tour.



A stylized, handwritten signature of Josh McDowell in a reddish-brown ink. The signature is fluid and cursive, with the first letters of the first and last names being capitalized and prominent.

Josh McDowell  
2025 President  
Alamance-Caswell Builders Association

# 2441 Pleasant Hill Liberty Road, Liberty



Discover the charm of Ruralview, a peaceful subdivision in Alamance County offering spacious living and scenic surroundings. Enjoy large lots, some exceeding 2 acres, providing plenty of room for outdoor activities, gardens, or simply extra privacy. Homes in Ruralview feature large, open floorplans designed for modern living, perfect for entertaining or relaxing with family. Located in a desirable area, this community is served by highly regarded EM Holt Elementary and Southern Alamance schools. Experience the perfect blend of rural tranquility and convenient access to nearby amenities. Ruralview offers the space, comfort, and lifestyle you've been looking for in Alamance County. Make your dream home a reality in this beautiful neighborhood!



J. Madison Homes, led by experienced builder Ralph Bevis and his incredible team, is dedicated to delivering exceptional quality and craftsmanship in every home we build.

With a strong reputation for integrity and attention to detail, we specialize in creating thoughtfully designed homes that combine modern functionality with timeless style. Our current focus is developing beautiful neighborhoods throughout central North Carolina, offering families and individuals a place to truly call home. Each project reflects our commitment to excellence, from the selection of premium materials to the precision of every finish. At J. Madison Homes, we don't just build houses—we create lasting value and communities where memories are made. Experience the difference of quality construction with a builder you can trust.

## CONTACT LUCAS HOWARD OR ASHTON DIXON

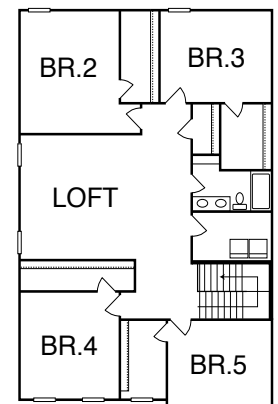
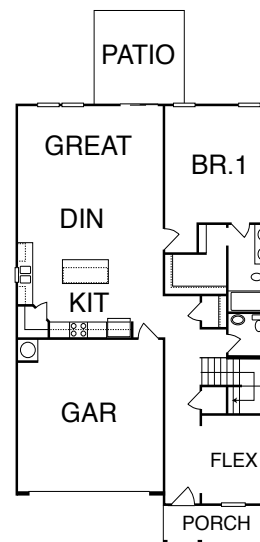
336-684-0277 | 336-675-5880

[jlucashoward@gmail.com](mailto:jlucashoward@gmail.com) | [ashdixon0@gmail.com](mailto:ashdixon0@gmail.com)

<https://jmadisonhomes.com>

## DIRECTIONS

Take Hwy 62 South. Turn Left onto Friendship Patterson Mill Rd. Turn Right on Friendship Rock Creek Rd. Turn Right onto Hwy 49. Turn Left onto Pleasant Hill Liberty Rd. Homes are on the Left.



# 6909 Steeplegate Drive, Burlington

*Steeplegate Subdivision*



Steeplegate is a stunning community designed for comfort and style, offering large, spacious lots that provide plenty of room to spread out and enjoy. Homes in Steeplegate feature beautiful brick and stone foundations that add timeless elegance and lasting durability. Each home is thoughtfully crafted with big back decks—perfect for relaxing, entertaining, or simply taking in the peaceful surroundings. Inside, you'll find expansive open floorplans that create a bright, airy feel and provide the flexibility you need for modern living. These homes are complete with stylish, contemporary updates, ensuring a perfect blend of functionality and design. Steeplegate offers the ideal setting for those seeking quality, space, and charm convenient to town.



J. Madison Homes, led by experienced builder Ralph Bevis and his incredible team, is dedicated to delivering exceptional quality and craftsmanship in every home we build.

With a strong reputation for integrity

and attention to detail, we specialize in creating thoughtfully designed homes that combine modern functionality with timeless style. Our current focus is developing beautiful neighborhoods throughout central North Carolina, offering families and individuals a place to truly call home. Each project reflects our commitment to excellence, from the selection of premium materials to the precision of every finish. At J. Madison Homes, we don't just build houses—we create lasting value and communities where memories are made. Experience the difference of quality construction with a builder you can trust.

## CONTACT LUCAS HOWARD OR ASHTON DIXON

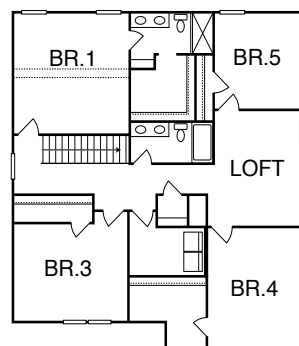
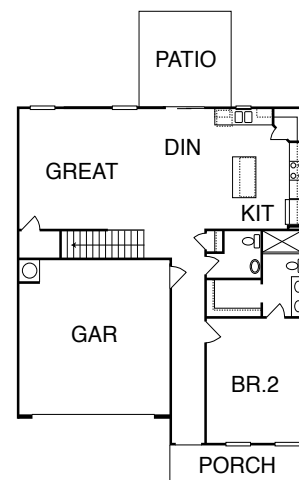
336-684-0277 | 336-675-5880

[jlucashoward@gmail.com](mailto:jlucashoward@gmail.com) | [ashdixon0@gmail.com](mailto:ashdixon0@gmail.com)

<https://jmadisonhomes.com>

## DIRECTIONS

Take Huffman Mill Rd to Shoe Rd. Turn Left onto Brick Church Rd. Turn Right onto Steeplegate Dr.





# BUILDING YOUR DREAM HOME IN ALAMANCE COUNTY

---

## *5 Tips To Finding The Best Local Builder to Make Building These Dreams A Reality*

---

Alamance County is truly a wonderful place to call home! With its prime location between the Triad and Triangle, our area offers the best of both worlds—easy access to larger cities paired with the comfort and charm of small-town living.

In recent years, new communities have been springing up across the county. From the eastern areas near Graham and Mebane to the western parts around Elon and Gibsonville, as well as along I-85/40, new construction is thriving. It's easy to see why—Alamance County offers space, convenience, and an unbeatable quality of life. Residents can enjoy vibrant downtown districts, local shops and restaurants, cultural events, and outdoor recreation, all while being just a short drive from major employment and entertainment hubs.

This growth has put a spotlight on the talented builders right here in our community. As an association, we're proud to represent professionals who take pride in their craftsmanship, pay close attention to detail, and stay on top of modern building trends. If you're thinking of building or buying a new home, selecting the right builder is one of the most important decisions you'll make.

To help you on your journey, here are five friendly tips from the Alamance-Caswell Builders Association for choosing the builder who's right for you.

### **1. Look for Credentials and Reputation**

Start with research. Choose builders who are licensed, insured, and established in the community. Read reviews, ask for references, and talk to past clients about their experience. A proven track record of quality work gives you confidence that your project is in good hands.

➡ **Tip:** Visit [www.alamancebuilders.org](http://www.alamancebuilders.org) to explore our directory of local builders and trusted industry partners.

### **2. Match Experience with Your Vision**

Every builder has their specialty. Some focus on custom homes with one-of-a-kind features, while others may work more in certain price ranges or neighborhoods. Review their portfolio, floor plans, and past projects to ensure their expertise aligns with the type of home you envision. A builder experienced in your preferred style will not only meet your expectations but also suggest creative ideas you may not have considered.

### **3. Prioritize Good Communication**

A smooth building process depends on clear and open

communication. Look for a builder who listens, answers questions promptly, and is transparent about timelines, costs, and potential challenges. The right builder will keep you informed at every step, reducing stress and making the process more enjoyable. Remember—you're not just hiring someone to build a house; you're entering into a partnership.

### **4. Compare Costs and Contracts Carefully**

It's smart to gather estimates from more than one builder. Be wary of bids that seem unusually low—they may cut corners on quality or hide extra costs. A clear, detailed contract that outlines expenses, timelines, and responsibilities protects both you and your builder. Don't hesitate to ask questions before signing. A trustworthy builder will gladly walk you through the details to ensure you're comfortable moving forward.

### **5. See Their Work in Person**

Whenever possible, visit completed homes or neighborhoods built by your top candidates. Seeing the craftsmanship firsthand tells you a lot about quality and style. Talking to current homeowners can also give you insight into how responsive the builder is after the home is complete. Even better—attend our annual Alamance-Caswell Parade of Homes, where you can tour homes built by members of our association, ask questions directly, and gather inspiration for your own project.

### **Building with Confidence**

Choosing the right builder is about more than hiring a contractor—it's about forming a partnership that will bring your dream home to life. By following these tips, you'll be well on your way to selecting a professional who understands your vision and can deliver a home built to last.

At the Alamance-Caswell Builders Association, we are proud to connect families with the area's most trusted builders and industry professionals. Together, we're building not just houses, but strong communities where you'll love to live for years to come.

If you're ready to start your home-building journey, we invite you to explore our directory, attend our events, and get to know the talented professionals shaping the future of Alamance County. Your dream home begins here—and we're excited to help you make it a reality.





**HOWARD  
HANNA**  
ALLEN TATE REAL ESTATE



**SANDY ELLINGTON-GRAVES**

Broker/REALTOR® since 2002  
SandySells4You.com (336) 516-2348



**CHANDLER**

CONCRETE MASONRY HARDSCAPES



**GROTTO**  
HARDSCAPES

**Casey Roberts**  
Technical Sales

O (336) 226-1181  
C (336) 516-4851  
E casey.roberts@chandlerconcrete.com

1006 S. Church Street  
P.O. Box 131  
Burlington, NC 27216

TRUST • EFFICIENCY • INNOVATION • SAFETY • COMMUNITY • SERVICE • SUSTAINABILITY



*"Our mission is to be your most valued building partner,  
building the homes we live in today."*

GREENSBORO BUILDING CENTER, INC  
405 E MEADOWVIEW RD,  
GREENSBORO, NC 27406

**336-273-6958**

[www.thebuildingcenterinc.com](http://www.thebuildingcenterinc.com)



**TRANSFORM YOUR  
GARAGE FLOOR  
WITH NORTH CAROLINA'S  
MOST TRUSTED EXPERT**

- ✓ Proprietary Industrial Grade Cyclospartic™ Coating
- ✓ 20X Stronger than Epoxy
- ✓ Unmatched Quality & Superior Durability
- ✓ Over 50 Finishes to Choose From
- ✓ Lifetime Warranty



**your Concrete  
Coating Solution**

**Locally Owned & Operated  
by Dave & Vicki Wisniewski**

**SCAN FOR FREE QUOTE & CONSULTATION  
(336) 814-2212**

<https://triad.garageforce.com>



# 778 Atwater Road, Burlington

Green Acres



This stunning country-style home boasts remarkable curb appeal and a smart, efficient layout with no wasted space! Step onto the welcoming covered front porch and enter a spacious living room that flows seamlessly into the kitchen and dining area—perfect for gatherings and family life. The kitchen offers a large island, a walk-in pantry, and extensive cabinetry, making it a dream for those who love to cook and entertain. Conveniently placed, the laundry room features its own cabinetry, countertop, and closet for optimal organization and connects directly to the single-car garage. Enjoy peace and relaxation on the hidden back deck, offering a private retreat for outdoor living. The thoughtfully designed split floor plan gives the primary bedroom maximum privacy, along with a spa-inspired bathroom showcasing dual sinks, a walk-in shower, and a bonus storage closet. Two secondary bedrooms are positioned near a full guest bathroom, ideal for family and visitors alike.



At Roll Construction, we turn your vision into reality with our unwavering commitment to quality craftsmanship, transparent communication, and enduring partnerships. As a dedicated local builder, we're passionate about bringing your dreams to life with excellence and care.

## CONTACT JENSEN ROLL

(336) 365-8673

[office@RollConstruction.co](mailto:office@RollConstruction.co)

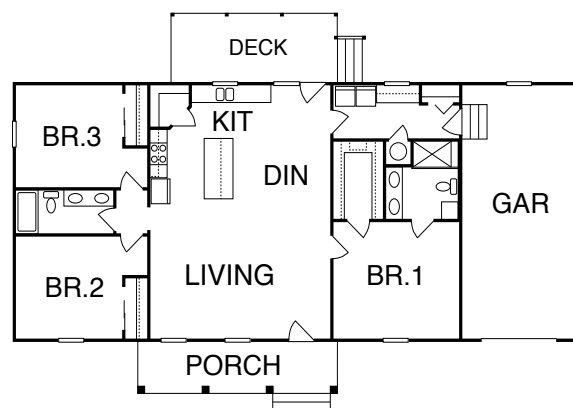
[www.RollConstruction.co](http://www.RollConstruction.co)

## DIRECTIONS

Take 62 North through Glencoe, turn left onto Union Ridge Rd, followed by an immediate left onto Greenwood Dr, stay right at the split for Iseley School Rd, then take another right onto Hollywood Dr, Atwater Rd will be the 2nd road on your left and the parade home will be the 2nd house on the left.

## ALAMANCE-CASWELL BUILDERS ASSOCIATES WHO COLLABORATED ON THIS BUILD

- A&J Hardwood Floors
- Armen Stone
- Budget Blinds
- Chambers Backhoe
- Hudson's Equipment and Grading
- TechSouth Modern Connections





# 3615 N. NC Hwy 62, Burlington

*Legends Subdivision*



HERITAGE  
HOMES  
OF THE  
CAROLINAS

Owner Nathan Sawyer has decades of experience to bring to the table for his clients and believes in a satisfied customer.

For that to happen, he strives

for elegant solutions, on time completion, and finishing within budget! To validate his professionalism, he has received numerous awards; including Builder of the Year 2 of the last 4 years (Alamance County), and 4 out of the last 6 years he has been awarded "Best New community".

Nathan wants to listen as you express your expectations for your new home, and he will be personally involved in making those expectations come true.

He served for more than ten years as a dedicated leader for Boy Scouts of America and has been involved with the Alamance/Caswell Builders Associations and is currently serving as their past President.

## CONTACT NATHAN SAWYER

(336) 587-0297

[NSawyer@hhotc.build](mailto:NSawyer@hhotc.build)

[www.heritagehomesofcarolinas.com](http://www.heritagehomesofcarolinas.com)

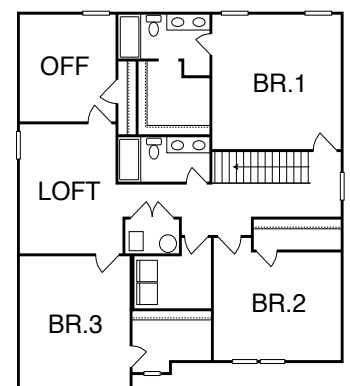
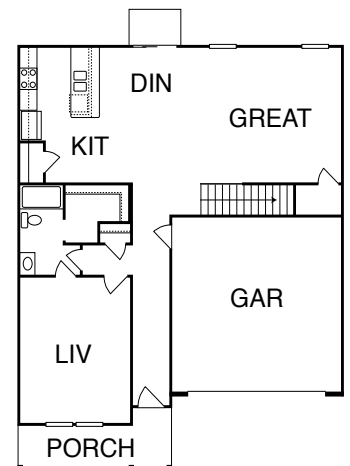
## DIRECTIONS

From downtown Burlington take HWY 62 North 5.2 miles and the home is on your right, 3615 N. NC HWY 62, Burlington.

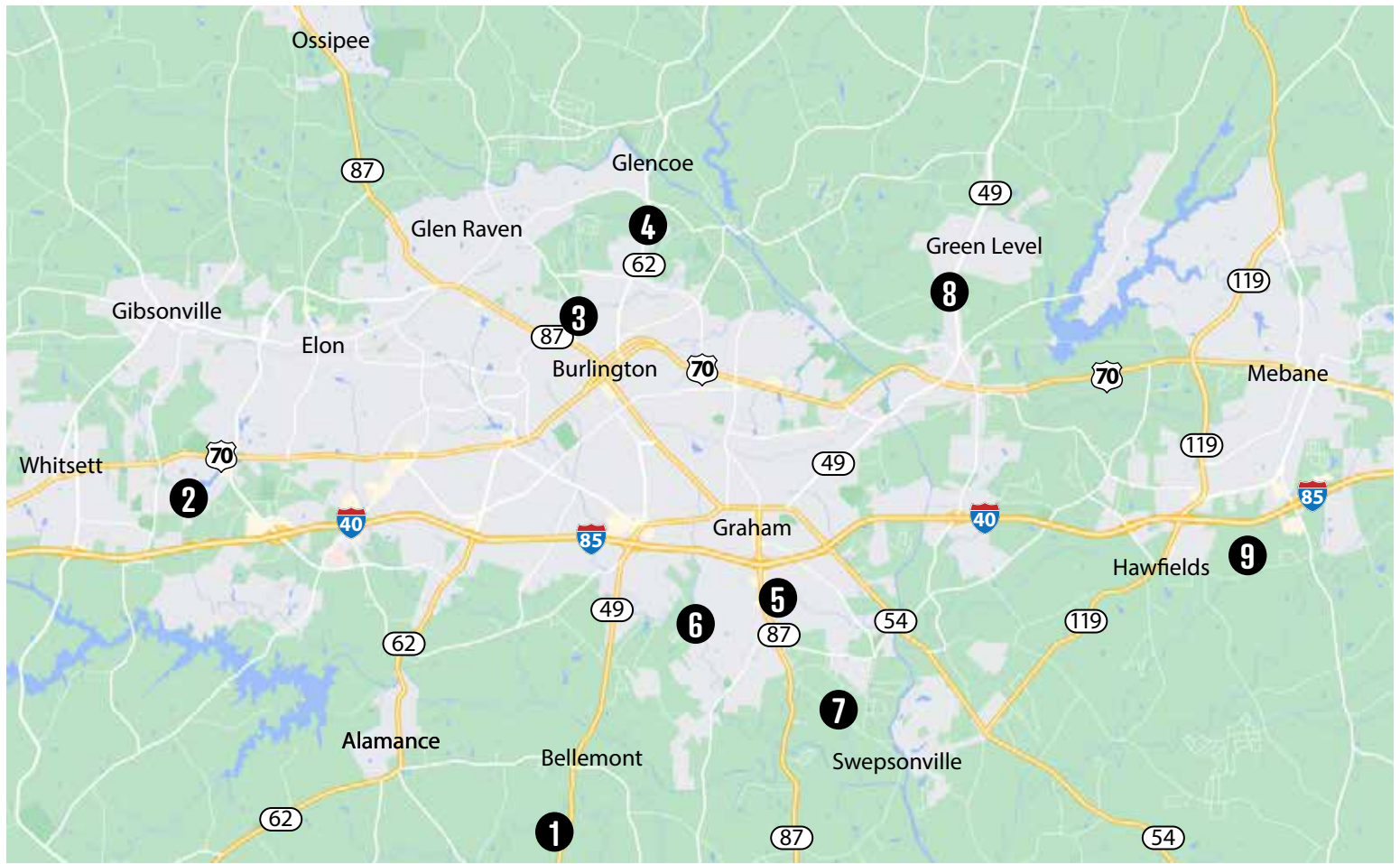
Stunning home on 1 acre in the desirable Eastern Alamance area! This bright, open-concept home features luxury vinyl flooring on the main level and a spacious kitchen with white maple cabinetry and quartz countertops. The kitchen flows seamlessly into the dining and living areas, perfect for entertaining. A bedroom and full bath on the main level offer convenience, while the upper level includes a luxurious owner's suite with a walk-in closet and ensuite bath with double vanities and a tub/shower combo. Two additional bedrooms, a full bath, office, and bonus room provide plenty of space. Additional highlights include an upstairs laundry room, pantry, 2-car garage, and a back patio. Located minutes from the Triad, this home offers the perfect balance of comfort and practicality.

## ALAMANCE-CASWELL BUILDERS ASSOCIATES WHO COLLABORATED ON THIS BUILD

- Mebane Builders Supply
- Builders Wholesale Flooring
- Fluette Heating and Air
- King Electric Lighting
- Speedy's Insulation
- Marsh Kitchens & Baths Cabinetry
- Budget Blinds of Alamance County







#### Home #1

244I Pleasant Hill Liberty Rd.  
Liberty, NC 27296



#### Home #4

3615 N. NC Hwy. 62,  
Burlington, NC 27217



HERITAGE  
HOMES  
OF THE  
CAROLINAS



#### Home #7

3508 Southern High Mt.  
Hermon Rd. Graham NC 27253



#### Home #2

6909 Steeplegate Dr.  
Burlington, NC 27215



#### Home #5

605 Sania Court,  
Graham, NC 27253



#### Home #8

2848 John Lewis Road  
Burlington, NC 27217



#### Home #3

778 Atwater Rd,  
Burlington, 27217



#### Home #6

3109 Cullens Drive,  
Graham, NC 27253



#### Home #9

3402 Saint Barts Place,  
Mebane, NC 27302



HERITAGE  
HOMES  
OF THE  
CAROLINAS



# GCF Inc. Custom Builder

Thoughtfully designed. Carefully crafted.®

Whether you're dreaming of a custom single-family home, planning an addition, or considering a remodel, GCF, Inc. is here to bring your vision to life. We can build on your lot, offer lots that are ready for construction, or help you find the ideal property to create your dream home.

At GCF, Inc., we believe customer satisfaction is the foundation of every project, and we consider our clients an essential part of the building process. With our team of skilled and knowledgeable craftsmen, we take pride in delivering homes that are truly custom, built to last, and designed around you.

Clifton Fogleman, owner of GCF, Inc. Custom Builder, is a licensed general contractor with more than 37 years of experience building in Alamance County. An alumnus of Appalachian State University, he holds degrees in both Real Estate and Finance. Clifton is an active board member of the Alamance-Caswell Builders Association and a three-time recipient of the Builder of the Year Award. Since 2018, he has also shared his expertise and passion for the craft at Alamance Community College, where he teaches two evening courses in contracting and carpentry.

Clifton resides in Alamance County with wife Carolyn, their six children and two grandchildren. He is an active lifelong member of Low's Lutheran Church.

## New Construction



## Remodeling



Clifton Fogleman • (336) 350-7108 • [clifton@buildwithgcf.com](mailto:clifton@buildwithgcf.com)  
[www.BuildWithGCF.com](http://www.BuildWithGCF.com)



# PAYNE PROPANE



since 1947

**Contact David Boyd  
for all of your LP Gas needs.**

**We specialize in underground  
LP gas tank installation  
for new construction.**

a division of Payne Oil Company, Inc.  
PO Box 3277, Burlington, NC 27215  
336-578-0404 | 800-332-7296 | fax 336-578-5787  
[david@payneoil.com](mailto:david@payneoil.com) | [payneoil.com](http://payneoil.com)



**HOWARD  
HANNA**  
ALLEN TATE REAL ESTATE

## Proud to be an ACHBA Builder Partner

**doing more together**

Congratulations on another great  
year of serving the local community  
with quality builders.

REAL ESTATE • MORTGAGE • INSURANCE • RELOCATION

[howardhannatate.com](http://howardhannatate.com) | 336-227-3666  
3315 Garden Rd, Burlington, NC 27215



## Proud to Support the Craft Behind the Parade

*Premium Building Materials | Dedicated Support for Builders, Remodelers, & DIYers  
Custom Showroom Experiences | Delivery Services You Can Count On*



At Talbert Building Supply, we're proud to support builders, remodelers, and DIYers across the region with a wide variety of quality materials and trusted brands. Family-owned for over 40 years, we're committed to service, strong partnerships, and dependable support from the ground up. Whether you're building new or enhancing a home, we're here to help bring your vision to life.

**Roxboro, NC     Asheboro, NC**  
**Durham, NC     Clemmons, NC**  
**Clarksville, VA     Danville, VA**  
**[TalbertBuildingSupply.com](http://TalbertBuildingSupply.com)**



# Become an ACBA Member



## INFORMATION HUB

### NETWORKING

### PRO-HOUSING

### CONTACTS

### TRAINING & EDUCATION

### MEETING SPACE

### COMMUNICATION

### COUNCILS & COMMITTEES

### RECOGNITION

- 3 in 1 Membership - Local (ACBA), State (NCHBA) and National (NAHB)
- National Discounts – [www.nahb.org/nahb-community/member-benefits](http://www.nahb.org/nahb-community/member-benefits)
- Networking Opportunities and Access to Expert Advisors
- Exposure to Largest Building Industry Products and Services
- Active Builder and Remodeler Discounts – [www.hbarebates.com/nchba/](http://www.hbarebates.com/nchba/)
- Builders Mutual - Workers' Compensation, General Liability, and other Commercial Lines Insurance
- NC Builder Institute General Contract Continuing Education Courses
- Member to Member Discounts
- Legislative & Government Affairs Advocacy
- Fundraising and Community Involvement
- Group BCBS Health Insurance (Eligibility requirements and details can be reviewed at [www.nchba.org/nchba-group-insurance-trust/](http://www.nchba.org/nchba-group-insurance-trust/))
- Educational Programs for Builder and Associate Members
- Industry Speakers and Lunch & Learns
- Builders Council and Professional Women in Building (PWB) Councils
- Boardroom and Office Access at Alamance-Caswell Builders Association

## ADVERTISING & NETWORKING

- Access to Influential Industry Leaders on local, state and national platforms
- Partnership Program & Special Event Opportunities
- Quarterly Newsletters & Monthly E-Builders
- Direct referrals & Membership lists
- Council & Membership Meetings
- Online Directory Listing
- Spring Golf Tournament
- Clay Shoot Tournament
- Educational Programs
- Family Fun Night
- Builder & Associate Expo
- Member Mix & Mingles
- Parade of Homes

**JOIN TODAY!**

**[www.alamancebuilders.org](http://www.alamancebuilders.org)**

**336-227-1336**

PO Box 1713 Burlington, NC 27216

# 605 Sania Court, Graham

Canterbury Subdivision



Thoughtfully designed. Carefully crafted.®

Clifton Fogleman, owner of GCF, Inc is a licensed general contractor with 40+ years' experience

building in Alamance County. He is an Appalachian State alumnus with degrees in Real Estate and Finance. Clifton is a three-time Builder of the Year Award winner. Clifton has been sharing his knowledge for building at Alamance Community College since 2018, teaching evening contractor/carpentry classes.

Whether you're looking for a custom-built home, an addition or remodel, let GCF, Inc, bring your vision to life! We're dedicated to customer satisfaction and feel the customer is an integral part of the building process. Creating a truly custom home requires skilled and knowledgeable craftsman like the ones found at GCF, Inc. Let us help you build your dream!

## CONTACT CLIFTON FOGLEMAN

(336) 350-7108

[clifton@buildwithgcf.com](mailto:clifton@buildwithgcf.com)

[BuildWithGCF.com](http://BuildWithGCF.com)

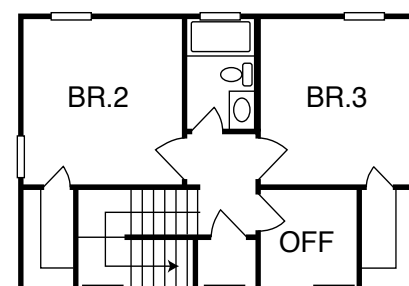
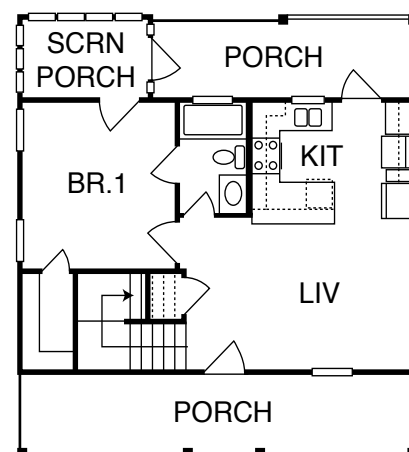
## DIRECTIONS

Exit 145 for NC-49 toward Burlington/Downtown Liberty, Turn right onto NC-49 S/Maple Avenue, left onto Hanford Avenue, right on Monroe Holt Rd, Turn left onto Thompson Rd., turn right on Sania Court

This beautifully crafted 3 bedroom, 2 bath, new construction home sits on an oversized cul-de-sac lot, offering both privacy and space in a peaceful setting. The main living areas will feature durable laminate flooring, with plush carpet in the bedrooms. The kitchen and bathrooms will be outfitted with solid wood cabinets and quartz countertops, showcasing both quality and style. Downstairs will also feature a spacious primary bedroom and bathroom with a luxurious ceramic tile shower. Upstairs will feature 2 additional bedrooms and full bath. Each bedroom has a walk-in closet. There is even space for that home office you've always wanted! Relax outdoors on the concrete front and rear porches, including a screened-in section perfect for entertaining or enjoying quiet evenings.

## ALAMANCE-CASWELL BUILDERS ASSOCIATES WHO COLLABORATED ON THIS BUILD

- ABC Supply
- Alamance Glass
- Alamance Lumber
- Cabinet Designs Plus
- Cantrell & Son Plumbing
- Fidelity Bank
- L & W Sand and Stone
- Lighting, Etc
- Mebane Builders Supply
- Sawyer Exterminating





# 3109 Cullens Drive, Graham

*Shamrock Valley Subdivision*



**CONCEPT  
BUILDERS**

**Building Alamance  
County Homes  
Since 1992!**

Looking for a builder who knows the area and puts quality first? Jimmy Collins of Concept Builders Inc. has been helping families feel at home in Alamance County for over 30 years. Whether you're drawn to luxury townhomes or spacious single family homes, we have options that fit a variety of lifestyles and budgets.

Want something custom? We make it easy—choose a plan and a lot, or let us build on land you already own. Either way, your home will be crafted with care, and built to suit your way of living.

Stop by to tour available homes or chat about your dream design.

**CONTACT JIMMY COLLINS**  
**(336) 228-0490**  
**[www.ConceptBuilders.net](http://www.ConceptBuilders.net)**

## DIRECTIONS

I-85/40 to exit 145, South on Hwy 49 to left on  
Monroe Holt Rd., right Lacy Holt Rd.,  
Right on Cullens Dr.

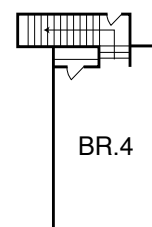
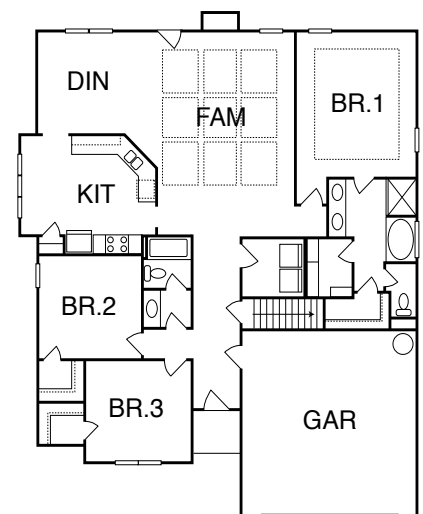
**B**eautiful 3BR/2BA Home with Bonus Room in Shamrock Valley

This 2,160 SF home features an open layout with a gourmet kitchen (granite countertops, stainless appliances, breakfast nook), formal dining room with crown molding, and a spacious great room with fireplace and coffered ceiling. The primary suite includes 2 walk-in closets and a luxurious en suite with garden tub, walk-in shower, double vanity, and private toilet area.

Bedrooms 2 & 3, a full bath, and laundry room complete the main level. Bonus room over the 2-car garage offers flexible space. HardiePlank® siding adds lasting curb appeal. Located in a quiet, established neighborhood.

## ALAMANCE-CASWELL BUILDERS ASSOCIATES WHO COLLABORATED ON THIS BUILD

- Amanzi Marble & Granite
- Atlantic Union Bank
- Burlington Carpet One
- Collins Construction
- Hawkins Backhoe & Septic
- L& W Sand and Stone
- Talbert Building Supply Inc.
- UFP Mid Atlantic LLC





No One Does  
**REAL ESTATE  
BETTER.**

REMAX Diamond Realty

Ken Walker    Laci Warren  
336-380-1849 | 336-263-7203

202 S. Fifth St. Mebane, NC 27302

**REMAX**

©2025 RE/MAX, LLC. Each Office Independently Owned and Operated 35\_716



**L & W Sand & Stone Inc.**

Masonry · Landscaping  
Stone & Concrete Supplies

**Buster & Chad Leach**

(919) 563-3000

Fax (336) 576-0831

lwsandandstoneinc@bellsouth.net    www.lwsandandstone.com

P.O. Box 505

1750 Highway 70

Mebane, NC 27302



**convergence**

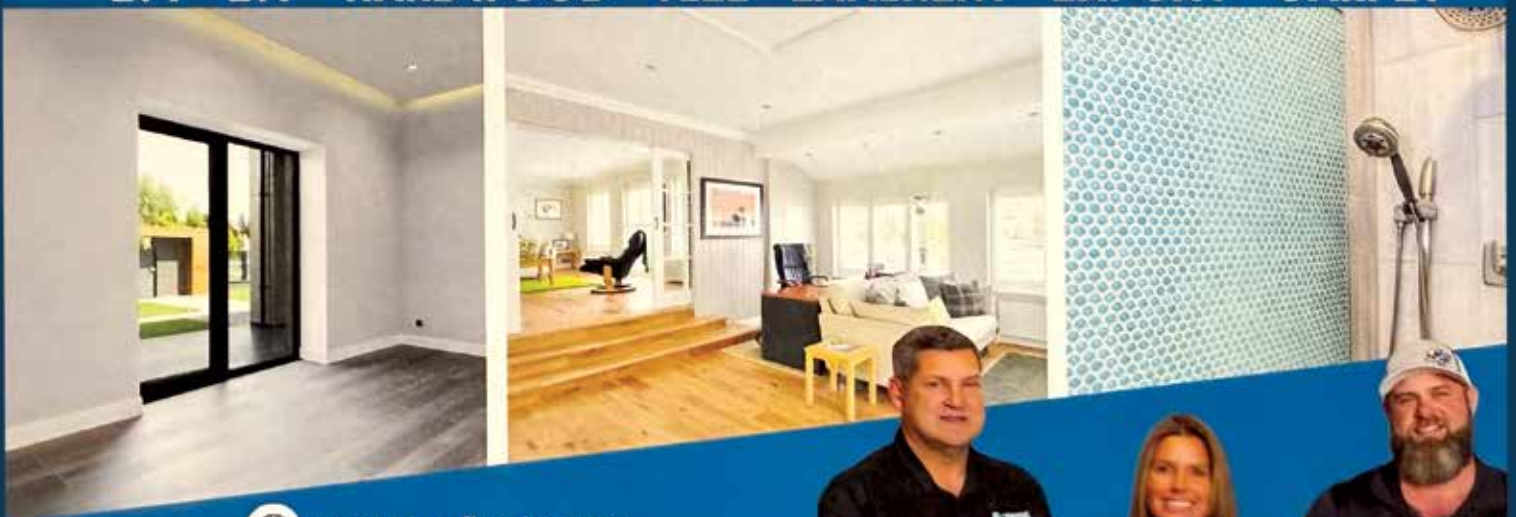
technology simplified

- Cell: 336.684.2304
- Office: 919.213.6370
- accounting@convergenceusa.com

**SF Sasser**  
FLOORING AND DESIGN

- ✓ Free Estimates
- ✓ Military Discounts
- ✓ Decades of Experience
- ✓ Locally Owned and Operated

**LVT - LVP - HARDWOOD - TILE - LAMINENT - EXPOXY - CARPET**



www.sasserflooring.com



CONTACT US



(919) 964-1801



481 Compass Dr Mebane, NC 27302



# Top 10 Home Design Trends for 2025

Each year brings new ideas that shape the way we live, and 2025 is no exception. Across the country, builders and designers are seeing homeowners prioritize comfort, flexibility, and long-term value in their homes. As an association representing our community's leading builders, we keep a close eye on the industry so we can share insights into what's next.

## 1. *Nature-Inspired Living*

Homeowners want stronger connections to the outdoors. Expect to see large windows, skylights, and even indoor greenery. Biophilic design—spaces that bring nature inside—creates calming, wellness-focused environments.

## 2. *Smart Homes Built In*

Technology is being integrated from the ground up. Automated lighting, climate control, and security systems are part of the build process, not add-ons. Homeowners enjoy more convenience, energy savings, and security.

## 3. *Warm, Inviting Minimalism*

Minimalist design continues to evolve. Instead of stark, cold spaces, homes are using natural wood, soft plaster, and layered lighting to create rooms that are both modern and comfortable.

## 4. *Bolder Color Choices*

Neutral palettes are giving way to personality. Homeowners are choosing jewel tones, earthy greens, terracotta shades, and dramatic accent walls to make a statement in living rooms,

kitchens, and bedrooms.

## 5. *Classic Touches Return*

Traditional design elements such as arches, alcoves, and English-inspired kitchens are making a comeback. These timeless details add charm and craftsmanship to today's modern layouts.

## 6. *Homes for Every Generation*

Designing for aging-in-place and multigenerational living is on the rise. Wider hallways, step-free entries, curbless showers, and flexible suites ensure homes remain functional for every stage of life.

## 7. *Flexible Floor Plans*

Open concepts remain popular, but flexibility is the priority. Sliding partitions, movable walls, and multipurpose rooms allow spaces to adapt to changing needs, whether it's a home office, guest space, or family gathering area.

## 8. *Kitchens with Character*

Kitchens remain the heart of the home, but finishes are shifting. Tiled countertops, stone accents, and handcrafted details add warmth and individuality, reflecting homeowners' desire for spaces that feel unique.



## *The Takeaway*

The key theme for 2025 is balance—homes that are modern yet timeless, efficient yet comfortable, and adaptable to the needs of every household.

As your local Builders Association, we're committed to keeping members and homeowners informed about the latest trends and innovations. Whether you're planning a new build or simply exploring ideas, these insights can help you make choices that ensure your home feels current today and will continue to serve you well into the future.



## Lighting, Etc.

*We won't keep you in the dark!*

113 W. Main Street  
Gibsonville, NC 27249  
336-449-7299 • 336-516-2254  
lightingetcnc@gmail.com



# 3508 Southern High School - Mt. Hermon Rd. Graham



This expansive custom home—exclusive to JTC Construction—delivers over 3,000 sq. ft. of thoughtfully designed living space. A rustic yet refined exterior with warm wood accents and covered porches welcomes you inside. The great room soars with vaulted pine ceilings, exposed beams, recessed lighting, and a striking stone fireplace. The open-concept kitchen boasts abundant cabinetry, a brick backsplash, oversized island, stainless appliances, and dual granite and quartz counters, plus a hidden walk-in pantry. The primary suite offers a private fireplace, spa-style bath, and walk-in closet. Two additional bedrooms share a full bath. A custom walnut staircase leads to a bonus suite with bath and closet. Blending natural textures, light, and detail, this home is designed for beauty, comfort, and functionality.



Jeff Throneburg Construction (JTC) was founded in 1999 by Jeff Throneburg, a licensed general contractor in Alamance County, North Carolina. JTC is a full-service company specializing in new construction, design, and

home renovations, with a focus on quality workmanship and strong client relationships. Built on a “hands-on approach,” Jeff and his son Blake remain actively involved on job sites to ensure excellence and client satisfaction.

Blake, also a licensed contractor, partners with his father to build everything from 700-square-foot tiny homes to 6,000-plus-square-foot estates. Over the past two decades, JTC has earned Parade of Homes awards and Builder of the Year honors, and takes pride in crafting homes that reflect clients’ dreams with the highest level of detail. The team provides project evaluations, cost estimates, scheduling support, and direct engagement with homeowners to meet quality and timeline goals. No matter the size or complexity, JTC delivers personal attention and careful craftsmanship to every project.

## CONTACT JEFF THRONEBURG

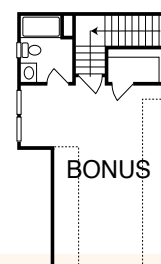
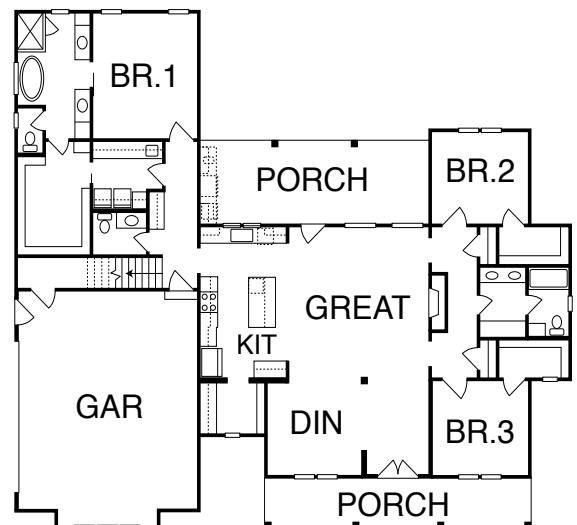
(336) 675-5520

[JeffThroneburgConstruction@gmail.com](mailto:JeffThroneburgConstruction@gmail.com)

[www.JeffThroneburgConstruction.com](http://www.JeffThroneburgConstruction.com)

## DIRECTIONS

From I40/85, Exit 147. South on Main St/Hwy 87. Right on Rogers Road.  
Travel 4.5 miles to Southern High Mount Hermon Rd.





# 2848 John Lewis Road, Burlington

*Ivey Meadows Subdivision*



The Holston Floor Plan is one of our largest and most popular plans. This home features 4 bedrooms, 3.5 baths, 3234 square feet, a first floor office, screened porch and a keeping room. This Holston sits on lot #8 in our newest community, Ivey Meadows. The expansive Owner's Suite includes 2 large walk-in closets, 2 vanities, a soaking tub, a separate shower and a private door to the laundry room! Ivey Meadows is located in a beautiful quiet setting across from the Quaker Creek Golf Course in Alamance County. This community is situated on the border of Mebane and Burlington, with lot sizes ranging from 1-3.5 acres!



Founded in 1982 by Craig Morrison, Cimarron Homes has earned the respect of homebuyers and the construction industry alike

by crafting custom and production value-packed homes that are energy efficient, environmentally responsible, and surprisingly affordable. With over 3,600 new homes and dozens of prestigious awards to our credit, Cimarron Homes continues to be a driving force in the homebuilding industry. When you purchase a value-packed Cimarron home, you can expect lower utility bills, healthier indoor air quality, low maintenance, and a higher resale value... Plus the flexibility we offer to give you just what you want in a home. Contact us today!

## CONTACT NICOLE REIBERT

(919) 943-9445

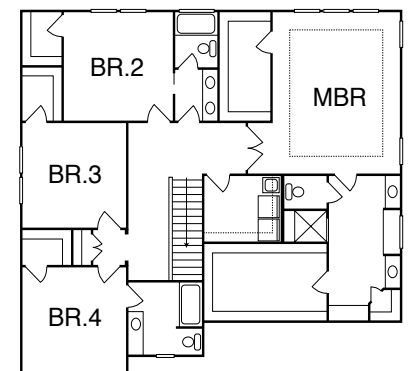
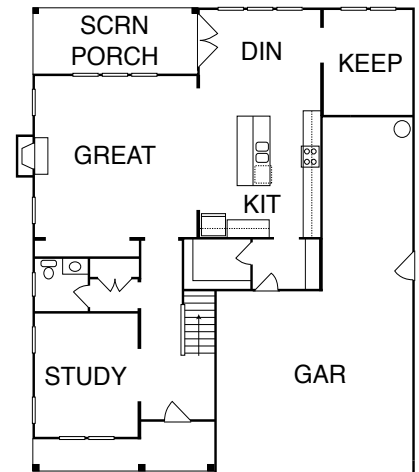
[nicole.reibert@cimarronhomes.com](mailto:nicole.reibert@cimarronhomes.com)  
[cimarronhomes.com](http://cimarronhomes.com)

## DIRECTIONS

From Mebane, heading west on 70: make a right on Dodson Rd., turn left on Mebane Rogers Rd., right on Miles Chapel Rd, left of Dickey Mill Rd., right on to Barnett Rd. and a left on to John Lewis Road

## ALAMANCE-CASWELL BUILDERS ASSOCIATES WHO COLLABORATED ON THIS BUILD

- Doug Kimrey and Sons Plumbing
- Foust & Holt Backhoe
- King Electric Company, Inc.
- Mebane Builders Supply
- QXO
- Talbert Building Supply
- Triad Drillers, Inc.
- Union Home Mortgage Allison Terrell



# SHARPE awards

Trophies, Plaques, Corporate Awards, Engraving, Name Badges, Gifts

sharpeawards@triad.rr.com  
336-226-8111

SharpeAwardsNC.com  
115 Engleman Avenue  
Burlington, NC 27215

## KING ELECTRIC CO., INC.

808 Chapel Hill Road  
Burlington, NC 27215  
*Lighting & Accessories Showroom*

BRIAN KING  
Secretary/Treasurer

(336) 226-8889 ext. 209  
Fax (336) 229-7988

bking@lightingelectric-co.com  
www.kingelectric-co.com

Eddie Robertson  
Contractor Sales

Pella® Windows & Doors  
Pella Carolina, Inc.  
772 Gallimore Dairy Rd, Ste 101  
High Point, NC 27265  
Cell: 336.669.0792  
Showroom: 336.379.8550  
Email: erobertson@pelladirect.com  
www.pellanorthcarolina.com



VIEWED TO BE THE BEST.®

Foust Pool Construction, LLC  
David & Jennifer Foust

(336) 938-5648  
jennifer@foustpools.com  
2145 Cooper Rd  
Graham, NC 27253  
www.foustpools.com

Local Family Owned & Operated

ALAMANCE-CASWELL BUILDERS ASSOCIATION PARTNER SINCE 2004

WE'RE THE **PARTNER**  
BEHIND MANY SUCCESSFUL  
BUILDERS AND BUSINESSES  
ACROSS OUR COMMUNITY.

**CONSTRUCT** a brand that sells  
**NAIL DOWN** a website that works 24/7

*Let's build your next project.*

*Call today or scan to start.*



Suzanna Chriscoe  
336.675.4278  
turnleafdesigns.net

Turnleaf Designs

*Bright Colors. Bold Strategy. Brilliant Results.*



# 3402 Saint Barts Place, Mebane

*Saint Barts Place Subdivision*



Clean white cladding and painted brick contrasting with dark window sashes and shutters create a modern palette that is highly desired by today's buyers. Steeply pitched gables and shed dormers complete the facade. The interior is as fresh and bright as the exterior - large, open rooms with wide window expanses flood the inside with natural light and liveliness. The main level holds the gathering areas and the master suite. The kitchen is fully equipped and features a large island. The dining area handles all meals from breakfast to holiday parties. The mudroom provides a barrier from the outside and helps prevent clutter. The master suite is luxurious and the perfect retreat after a long day. The first floor guest suite is just what a weary traveler needs to arrive to and doubles as a home work space. The upper level has two additional bedrooms with walk-in closets. The optional bonus room has many functions from simple storage to recreation space - you decide.



HERITAGE  
HOMES  
OF THE  
CAROLINAS

Owner Nathan Sawyer has decades of experience to bring to the table for his clients and believes in a satisfied customer. For that to happen, he strives for elegant solutions, on time

completion, and finishing within budget! To validate his professionalism, he has received numerous awards; including Builder of the Year 2 of the last 4 years (Alamance County), and 4 out of the last 6 years he has been awarded "Best New community".

Nathan wants to listen as you express your expectations for your new home, and he will be personally involved in making those expectations come true.

He served for more than ten years as a dedicated leader for Boy Scouts of America and has been involved with the Alamance/Caswell Builders Associations and is currently serving as their past President.

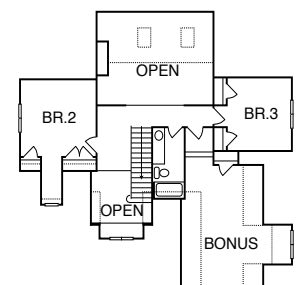
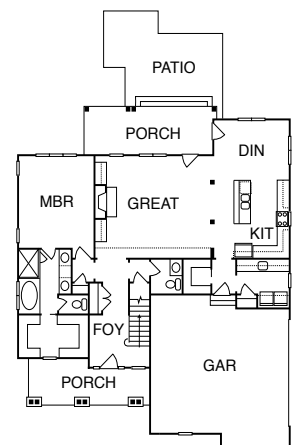
**CONTACT NATHAN SAWYER**  
(336) 587-0297  
NSawyer@hhotc.build  
[www.heritagehomesofcarolinas.com](http://www.heritagehomesofcarolinas.com)

## DIRECTIONS

Take I85/40 east to exit 153 (Hwy. 119). Head south 1.5 miles and turn left on Old Hillsborough Road. Drive .9 miles and take a right on Saint Barts. Home is on the right.

## ALAMANCE-CASWELL BUILDERS ASSOCIATES WHO COLLABORATED ON THIS BUILD

- Mebane Builders Supply
- Builders Wholesale Flooring
- Fluette Heating and Air
- King Electric Lighting
- Speedy's Insulation
- Marsh Kitchens & Baths Cabinetry
- Budget Blinds of Alamance County





**HERITAGE  
HOMES  
OF THE  
CAROLINAS**

**Come and visit our design center located at:  
1141 Jay Lane, Graham NC 27253**

**What our customers are saying:**

Nathan has decades of experience to bring to the table for his clients and he has numerous awards that validate his professionalism. Nathan has developed a keen eye for setting high expectations for himself and his trade partners. This brings a level of quality and craftsmanship that one of his most discerning customers appreciates.



**Nathan Sawyer  
General Contractor**

336.587.0297  
nsawyer@hhotc.build  
www.hhotc.build